



*Total Solution Provider in Saw Device*

---

# SL07526AV

75.0 MHz IF SAW Filter  
25.0 MHz Bandwidth  
Revision 0: 5. December. 2007

---



- Electrical Characteristics
  - Package Dimensions
  - Testing Environment
  - Frequency Characteristics
- 

**SAWNICS Inc.**

---

460 Cheonheung-ri, Seonggeo-eup, Cheonan-si, Chungcheongnam-do, 330-836 / Korea.  
Tel: +82 41 550 9372 / Fax: +82 41 550 9399 / [www.sawnics.com](http://www.sawnics.com)

## □ Electrical Characteristics

### Maximum Ratings

Parameters Description	Unit	Minimum	Typical	Maximum
Operation Temperature Range	°C	-30	-	80
Storage Temperature Range	°C	-40	-	85
Maximum DC Voltage	V	-	-	10
Maximum Input Power	dBm	-	-	10
Source Impedance (single ended) <sup>(1)</sup>	Ω	-	50	-
Load Impedance (single ended) <sup>(1)</sup>	Ω	-	50	-
Package type & size	V			
Length x Width	mm <sup>2</sup>	-	13.3 x 6.5	-
Height	mm	-	-	1.8

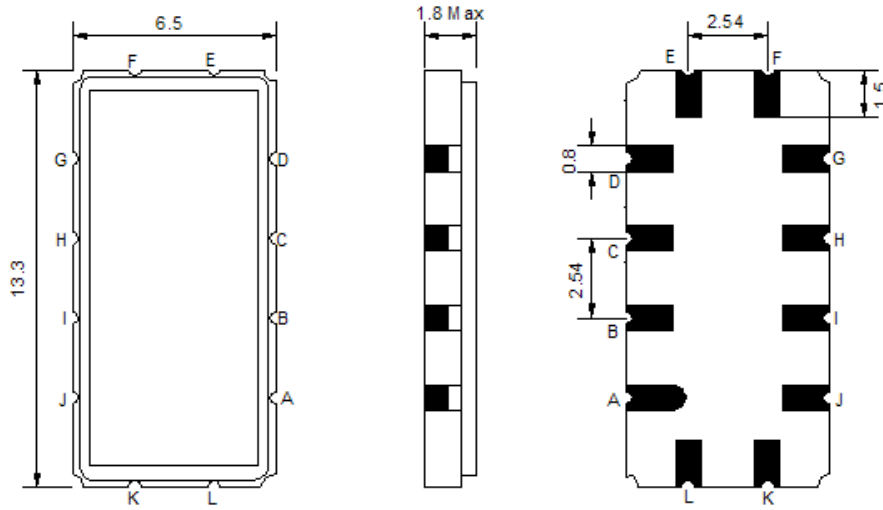
### Electrical Specification

Parameters Description	Unit	Minimum	Typical	Maximum
Center Frequency (Fo)	MHz	-	75.0	-
Insertion Loss at Fo	dB	-	16.3	18.0
Group Delay Variation (Fo±12.5MHz)	nsec	-	18	35
Absolute Delay at Fo	usec	-	0.82	-
Temperature Coefficient	ppm/°C	-	-86	-
Passband Ripple (Fo±12.5MHz)	dB	-	0.40	1.00
Bandwidth at -1dB	MHz	26.0	26.7	-
Bandwidth at -3dB	MHz	-	27.9	-
Bandwidth at -40dB	MHz	-	33.2	35.0
<b>Relative Attenuation</b>				
Lower Sidelobe	dB	-	48	-
Upper Sidelobe	dB	-	45	-

**Notes :** (1) With Matching Network (Ref. Testing Environment Circuit as shown below).

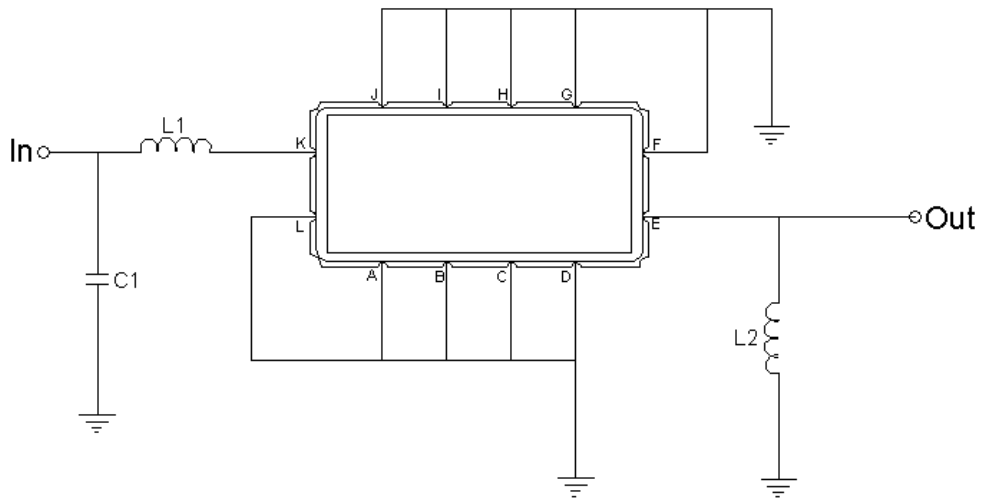
Those impedances could be modified with different impedance values and/or structures, if necessary.

**□ Package Dimensions**



Pin Description	
A, B, C, D, F, G, H, I, J, L	Ground
K	Input
E	Output

**□ Testing Environment**

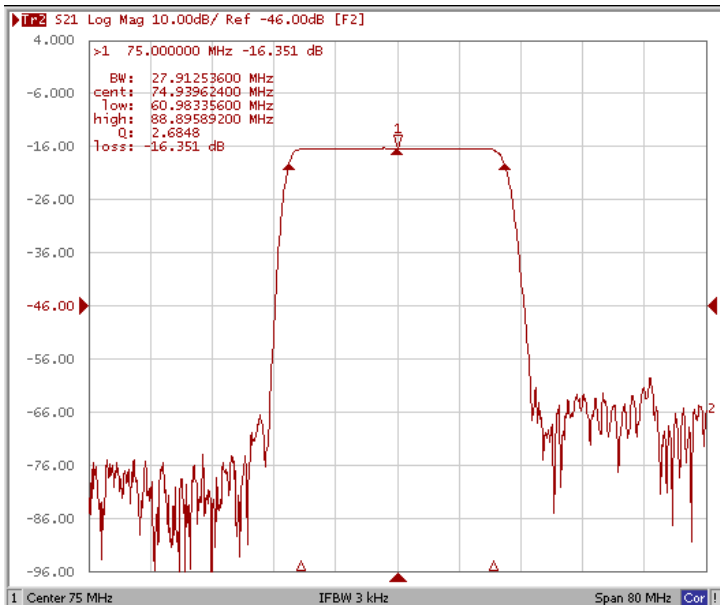


Test Fixture & Values	
Input	L1=120 nH, C1=12pF
Output	L2=120 nH
Source/Load Impedance	50 Ω

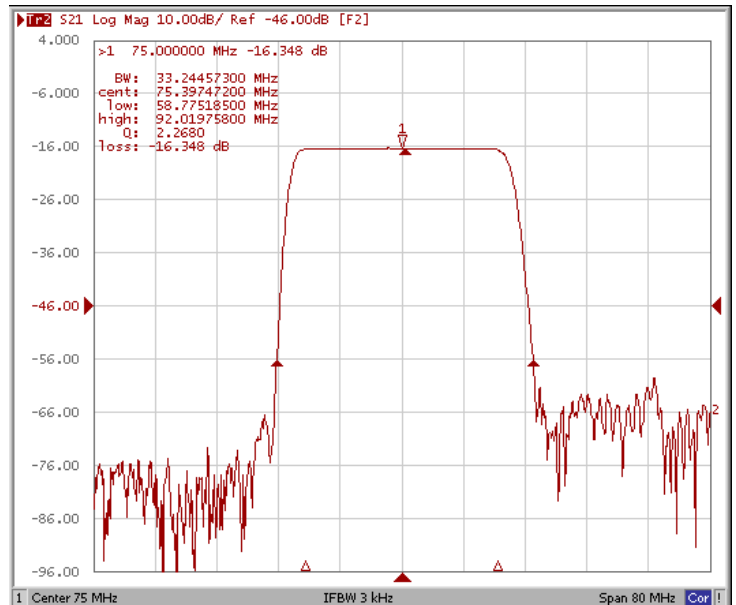
### Frequency Characteristics

#### Frequency Response

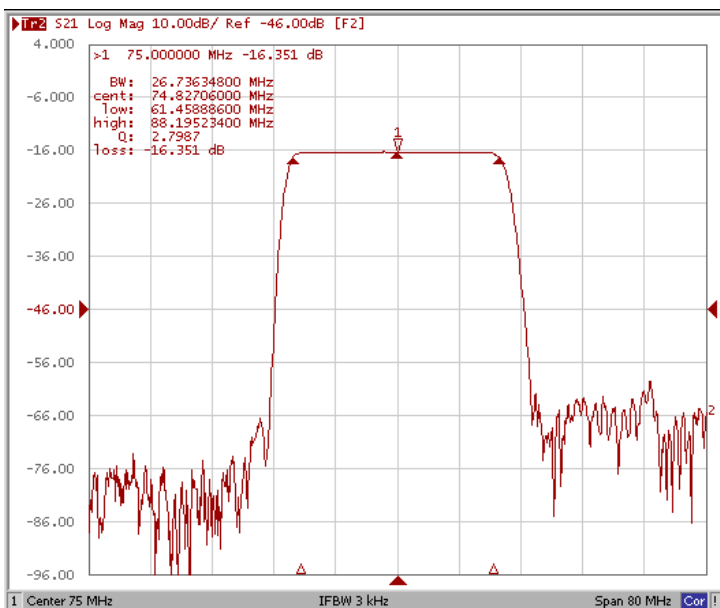
Bandwidth at -3.0 dB



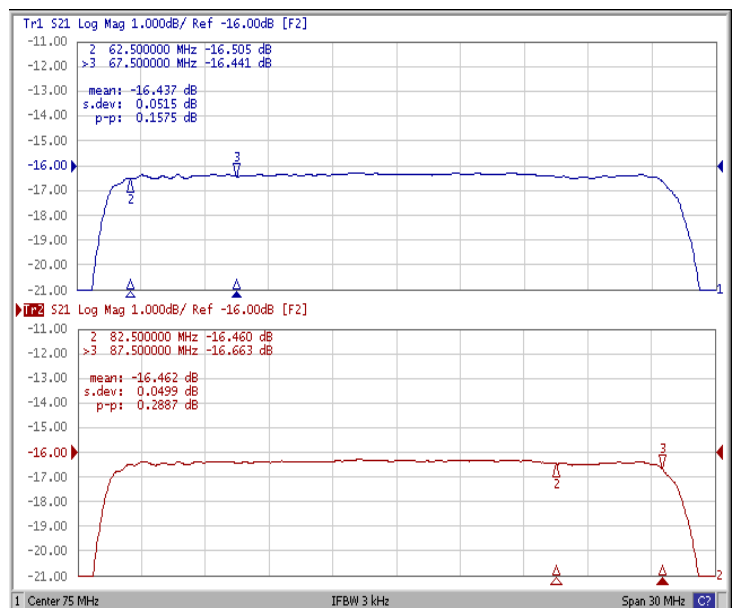
Bandwidth at -40.0 dB



Bandwidth at -1.0 Db



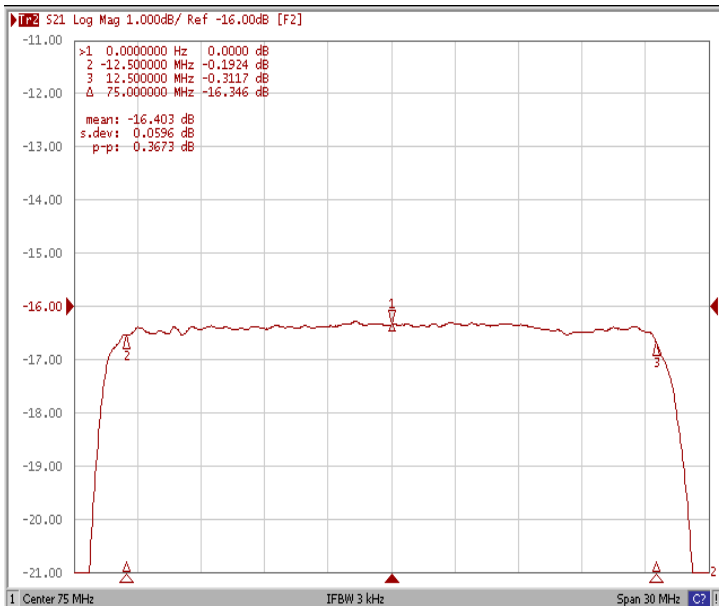
Ripple Variation Fs +5.0MHz / FI -5.0MHz



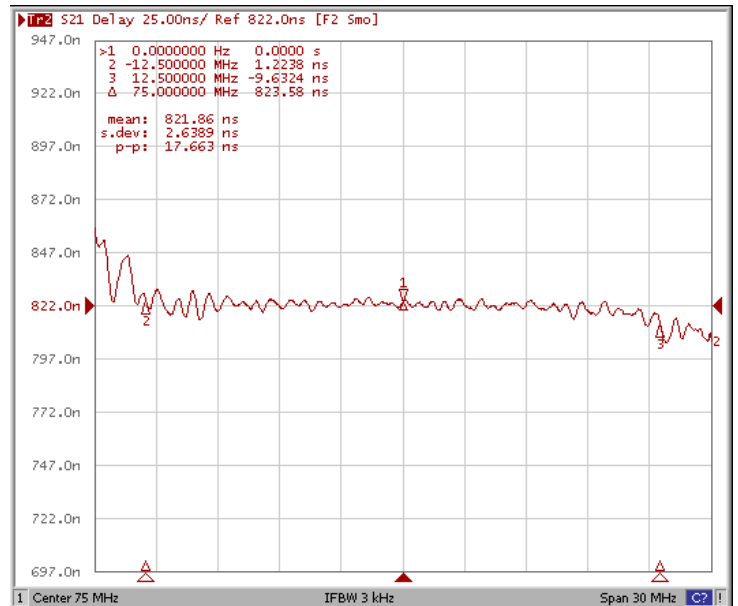
### □ Frequency Characteristics

#### Frequency Response

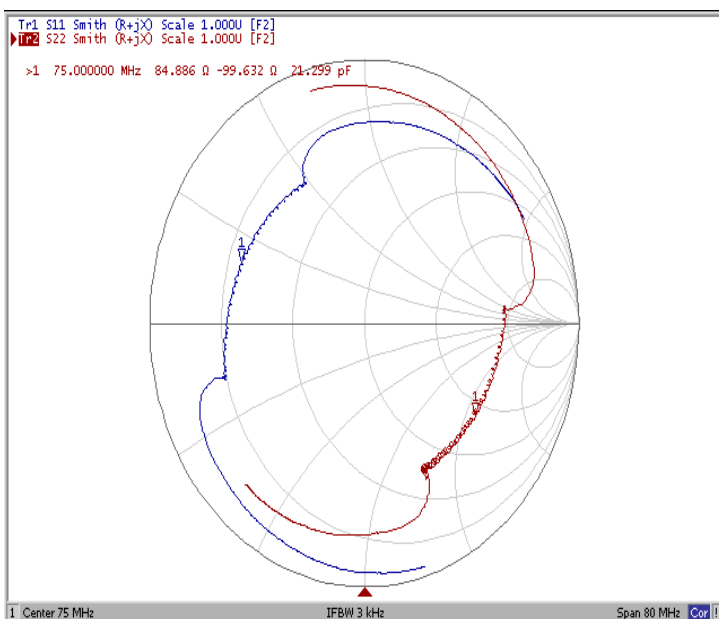
Ripple Variation  $F_o \pm 12.5\text{MHz}$



Group Delay Variation  $F_o \pm 12.5\text{MHz}$



Smith Chart



VSWR

